



Elmasense Cavicheck

Quick Start Guide.



Elmasense Cavicheck Set

1

→

2

+ ✓

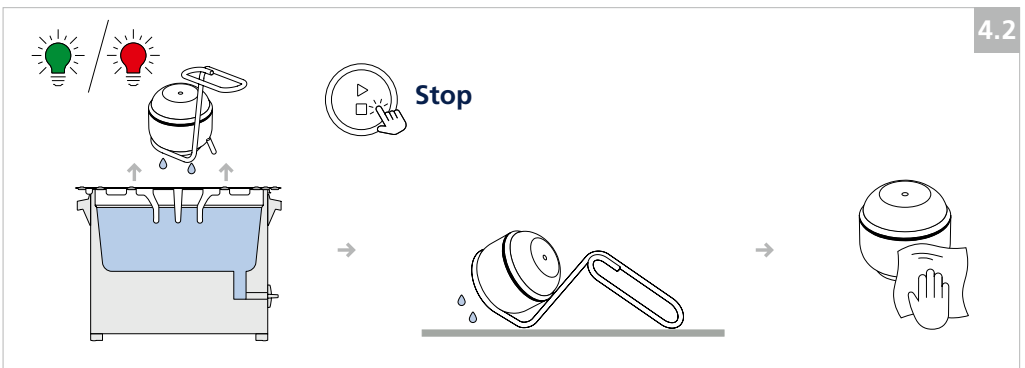
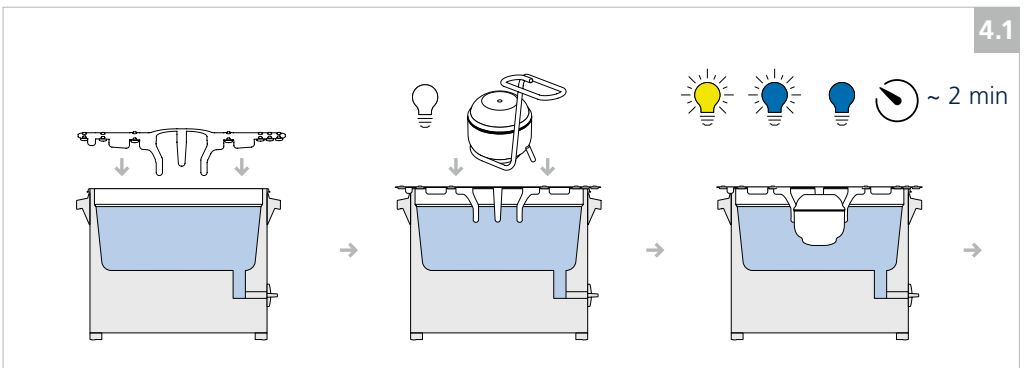
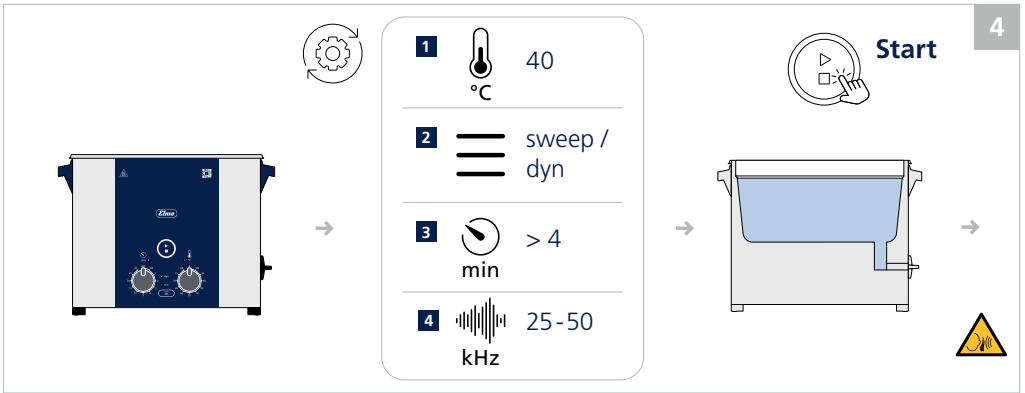
Elma lab clean N10

+ ✗

3

1		40 °C
2		degas / dyn
3		10 min

	OFF		1 sec	
		✓		≥ 206 dB ✓
	21 x	✓		< 206 dB ✗



Login:
Elma Hub



NFC



Elma Schmidbauer GmbH
Gottlieb-Daimler-Straße 17
78224 Singen (Germany)

info@elma-ultrasonic.com
www.elma-ultrasonic.com



Art. no.: 1143804

Technische und optische Änderungen vorbehalten. 03_26